



Consolidated Test Report

SAMPLE INFORMATION:

Sample Description : **All in One**
Trademark : **N/A**
Model Number : **M22**
M20.
Manufacturer : **Hibertek International Limited**
Manufacturer Address : Rm. 6, 21F., No.5, Sec. 3, New Taipei Blvd., Xinzhuang Dist., New Taipei City 242, Taiwan (R.O.C.)

CLIENT INFORMATION:

Applicant : **Hibertek International Limited**
Applicant Address : Rm. 6, 21F., No.5, Sec. 3, New Taipei Blvd., Xinzhuang Dist., New Taipei City 242, Taiwan (R.O.C.)
Test Standard : **IEC62321-1: 2013**
Comment : **The data shown in this consolidated test report did not exceed the limits of RoHS Directive 2011/65/EU, and its amendment directives.**
Issue Date : **Jul. 02, 2015**

REMARKS:

1. The test data obtained and the report issued by laboratories other than BCTC are provided by the applicant to us for data consolidation purposes. The report shall not be reproduced in part without written approval of us.
2. Characterization & Condition of sample: Normal.

Approved by: _____

Casey WangDate: Jul. 02, 2015



Consolidated Test Report

No.	Component	Test Lab	Report No.& Issue Date	Test Data(ppm)
1	BLACK PLASTIC	SGS	SHAEC1407665102 2014-05-07	Cd: N.D. Pb: N.D. Hg: N.D. Cr ⁶⁺ :N.D. PBBS: N.D. PBDES: N.D.
2	LIQUID CRYSTAL DISPLAY	SGS	CANEC1111351801 2011-12-05	Cd: N.D. Pb: N.D. Hg: N.D. Cr ⁶⁺ : N.D. PBBS: N.D. PBDES: N.D.
3	SCREW	SGS	CANEC1316900509 2013-11-07	Cd: N.D. Pb: N.D. Hg: N.D. Cr ⁶⁺ : N.D.
4	METAL	SGS	SHAEC1403165812 2014-04-03	Cd: N.D. Pb: N.D. Hg: N.D. Cr ⁶⁺ :N.D. PBBS: N.D. PBDES: N.D.
5	RED WIRE	SGS	CANEC1306721301 2013-05-20	Cd: N.D. Pb: N.D. Hg: N.D. Cr ⁶⁺ :N.D. PBBS: N.D. PBDES: N.D.



Consolidated Test Report

No.	Component	Test Lab	Report No.& Issue Date	Test Data(ppm)
6	YELLOW WIRE	SGS	CANEC1306721303 2013-05-20	Cd: N.D. Pb: N.D. Hg: N.D. Cr ⁶⁺ :N.D. PBBS: N.D. PBDES: N.D.
7	GREEN WIRE	SGS	CANEC1306721303 2013-05-20	Cd: N.D. Pb: N.D. Hg: N.D. Cr ⁶⁺ :N.D. PBBS: N.D. PBDES: N.D.
8	BLUE WIRE	SGS	CANEC1306721303 2013-05-20	Cd: N.D. Pb: N.D. Hg: N.D. Cr ⁶⁺ :N.D. PBBS: N.D. PBDES: N.D.
9	ORANGE WIRE	SGS	CANEC1306721305 2013-05-20	Cd: N.D. Pb: N.D. Hg: N.D. Cr ⁶⁺ :N.D. PBBS: N.D. PBDES: N.D..
10	PURPLE WIRE	SGS	CANEC1306721305 2013-05-20	Cd: N.D. Pb: N.D. Hg: N.D. Cr ⁶⁺ :N.D. PBBS: N.D. PBDES: N.D.



Consolidated Test Report

No.	Component	Test Lab	Report No.& Issue Date	Test Data(ppm)
11	BROWN WIRE	SGS	CANEC1306721307 2013-05-15	Cd: N.D. Pb: N.D. Hg: N.D. Cr ⁶⁺ :N.D. PBBS: N.D. PBDES: N.D.
12	BLACK WIRE	SGS	CANEC1306956801 2013-05-20	Cd: N.D. Pb: N.D. Hg: N.D. Cr ⁶⁺ :N.D. PBBS: N.D. PBDES: N.D.
13	WHITE WIRE	SGS	CANEC1306956803 2013-05-20	Cd: N.D. Pb: N.D. Hg: N.D. Cr ⁶⁺ :N.D. PBBS: N.D. PBDES: N.D.
14	CABLE TIES	SGS	CANML1307538101 2013-05-30	Cd: N.D. Pb: N.D. Hg: N.D. Cr ⁶⁺ : N.D. PBBS: N.D. PBDES: N.D.
15	PCB	SGS	CANEC1318164205 2013-11-27	Cd: N.D. Pb: N.D. Hg: N.D. Cr ⁶⁺ : N.D. PBBS: N.D. PBDES: N.D.



Consolidated Test Report

No.	Component	Test Lab	Report No.& Issue Date	Test Data(ppm)
16	TIN	SGS	CANEC1318489302 2013-11-30	Cd: N.D. Pb: 26 Hg: N.D. Cr ⁶⁺ : N.D.
17	SMD CAPACITOR	SGS	KA/2014/10558 2014-01-21	Cd: N.D. Pb: N.D. Hg: N.D. Cr ⁶⁺ : N.D. PBBS: N.D. PBDES: N.D.
18	SMD RESISTOR	SGS	SHAEC1324969633 2014-01-03	Cd: N.D. Pb: 585 Hg: N.D. Cr ⁶⁺ : N.D. PBBS: N.D. PBDES: N.D.
19	SMD DIODE	SGS	SHAEC1321669505 2013-11-11	Cd: N.D. Pb: N.D. Hg: N.D. Cr ⁶⁺ : N.D. PBBS: N.D. PBDES: N.D.
20	SMD TRANSISTOR	SGS	CKGEC1400013701 2014-01-22	Cd: N.D. Pb: N.D. Hg: N.D. Cr ⁶⁺ : N.D. PBBS: N.D. PBDES: N.D.



Consolidated Test Report

No.	Component	Test Lab	Report No.& Issue Date	Test Data(ppm)
21	SMD INDUCTOR	SGS	CANEC1317018901 2013-11-07	Cd: N.D. Pb: N.D. Hg: N.D. Cr ⁶⁺ : N.D. PBBS: N.D. PBDES: N.D.
22	LED	SGS	CANEC1309733701 2013-07-01	Cd: N.D. Pb: N.D. Hg: N.D. Cr ⁶⁺ : N.D. PBBS: N.D. PBDES: N.D.
23	ALUMINUM ELECTROLYTIC CAPACITOR	SGS	CANEC1302481101 2013-03-07	Cd: N.D. Pb: 9 Hg: N.D. Cr ⁶⁺ : N.D. PBBS: N.D. PBDES: N.D.
24	CRYSTAL	SGS	CANEC1318423403 2013-12-03	Cd: N.D. Pb: N.D. Hg: N.D. Cr ⁶⁺ : N.D. PBBS: N.D. PBDES: N.D.
25	HEAT SINK	SGS	CANEC1205679701 2012-05-12	Cd: N.D. Pb: 14 Hg: N.D. Cr ⁶⁺ : N.D. PBBS: N.D. PBDES: N.D.



Consolidated Test Report

No.	Component	Test Lab	Report No.& Issue Date	Test Data(ppm)
26	IC	SGS	SHAEC1402687703 2014-03-06	Cd: N.D. Pb: 19 Hg: N.D. Cr ⁶⁺ : N.D. PBBS: N.D. PBDES: N.D.
27	HEAT-SHRINKABLE TUBE	SGS	CANEC1400271202 2014-01-14	Cd: N.D. Pb: N.D. Hg: N.D. Cr ⁶⁺ : N.D. PBBS: N.D. PBDES: N.D.
28	LINE CHOKE-COPPER WIRE	SGS	CANML1303184202 2013-03-18	Cd: N.D. Pb: N.D. Hg: N.D. Cr ⁶⁺ :N.D.
29	LINE CHOKE -YELLOW TAPE	SGS	SHAEC1222920004 2013-01-05	Cd: N.D. Pb: N.D. Hg: N.D. Cr ⁶⁺ :N.D. PBBS: N.D. PBDES: N.D
30	LINE CHOKE—CORE	SGS	CANEC1309570001 2013-06-25	Cd: N.D. Pb: N.D. Hg: N.D. Cr ⁶⁺ : N.D.



Consolidated Test Report

No.	Component	Test Lab	Report No.& Issue Date	Test Data(ppm)
31	LINE CHOKE -BOBBIN	SGS	CE/2013/43276 2013-04-22	Cd: N.D. Pb: 10 Hg: N.D. Cr ⁶⁺ : N.D. PBBS: N.D. PBDES: N.D.
32	INDUCTOR	SGS	CANEC1210038501 2012-07-31	Cd: N.D. Pb: N.D. Hg: N.D. Cr ⁶⁺ : N.D. PBBS: N.D. PBDES: N.D.
33	TRANSFORMER-BOBBIN	SGS	CE/2013/43276 2013-04-22	Cd: N.D. Pb: 10 Hg: N.D. Cr ⁶⁺ : N.D. PBBS: N.D. PBDES: N.D.
34	TRANSFORMER-CORE	SGS	CANEC1302776202 2013-03-13	Cd: N.D. Pb: N.D. Hg: N.D. Cr ⁶⁺ : N.D. PBBS: N.D. PBDES: N.D.
35	TRANSFORMER-YELLOW TAPE	SGS	SHAEC1222920004 2013-01-05	Cd: N.D. Pb: N.D. Hg: N.D. Cr ⁶⁺ :N.D. PBBS: N.D. PBDES: N.D



Consolidated Test Report

No.	Component	Test Lab	Report No.& Issue Date	Test Data(ppm)
36	TRANSFORMER-WHITE NONWOVENS TAPE	SGS	SHAEC1300820804 2013-01-21	Cd: N.D. Pb: N.D. Hg: N.D. Cr ⁶⁺ :N.D. PBBS: N.D. PBDES: N.D.
37	TRANSFORMER-ENAMELLED ROUND COPPER WIRE	SGS	SHAEC1406347301 2014-04-18	Cd: N.D. Pb: N.D. Hg: N.D. Cr ⁶⁺ :N.D. PBBS: N.D. PBDES: N.D.

NOTE:

- (1) Pb Limit=1000mg/kg, Cd Limit=100mg/kg, Hg Limit=1000mg/kg;
Cr⁶⁺ Limit=1000mg/kg ; PBBs Limit=1000mg/kg, PBDEs Limit=1000mg/kg
- (2) N.D. = not detected (<MDL)
- (3) MDL=Method Detection Limit
- (4) ppm = mg/kg
- (5) Conclusion:

The results shown on the report do not exceed the limit of the council of 8 June 2011 on the restriction of the use of certain hazards substances in electrical and electronic equipment under directive 2011/65/EU of the European parliament.

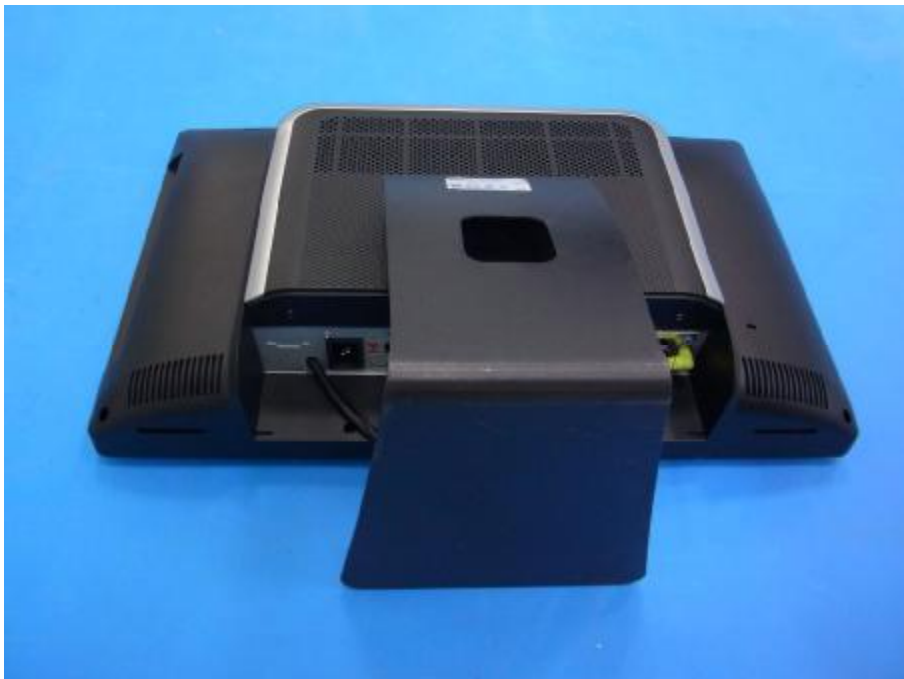
Consolidated Test Report

PHOTOGRAPHS OF SAMPLE AS RECEIVED

EUT Photo 1



EUT Photo 2



Consolidated Test Report

EUT Photo 3

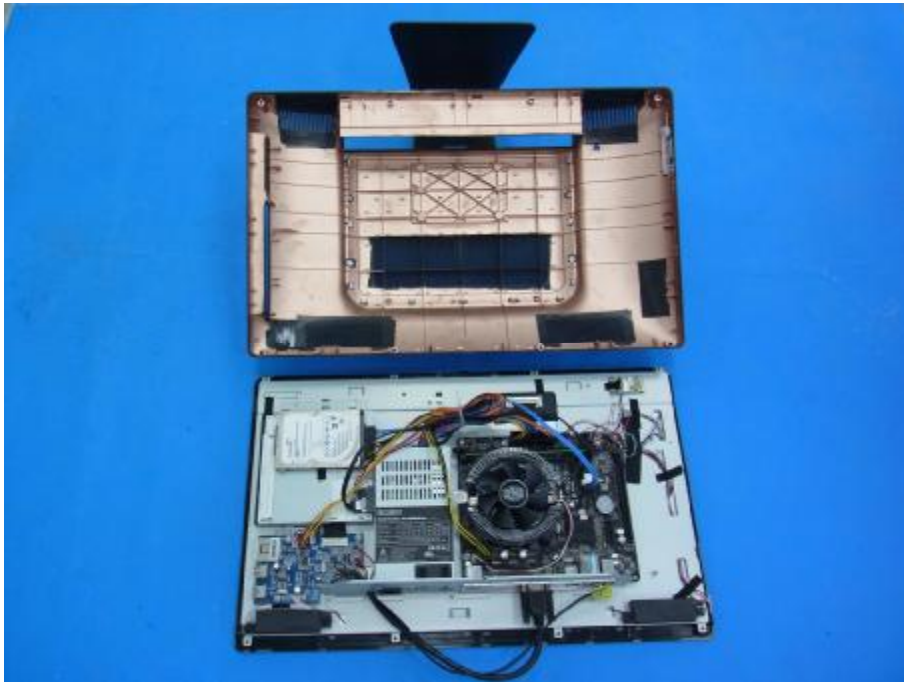


EUT Photo 4



Consolidated Test Report

EUT Photo 5



EUT Photo 6



***** END OF REPORT *****